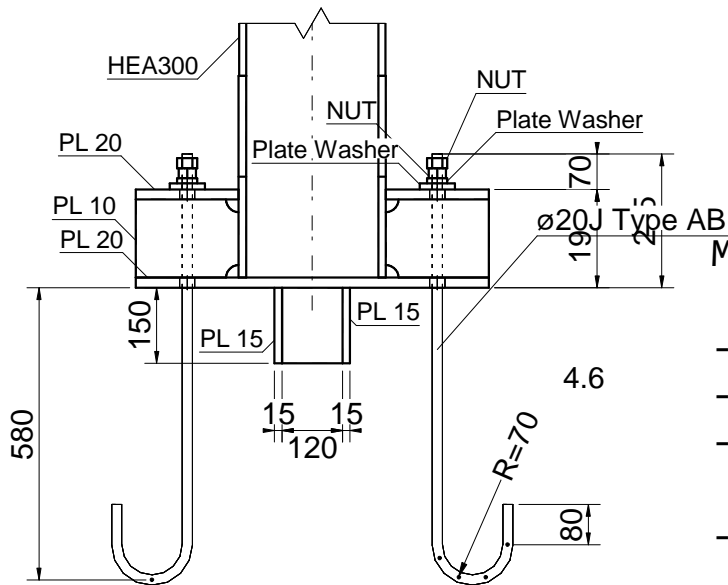
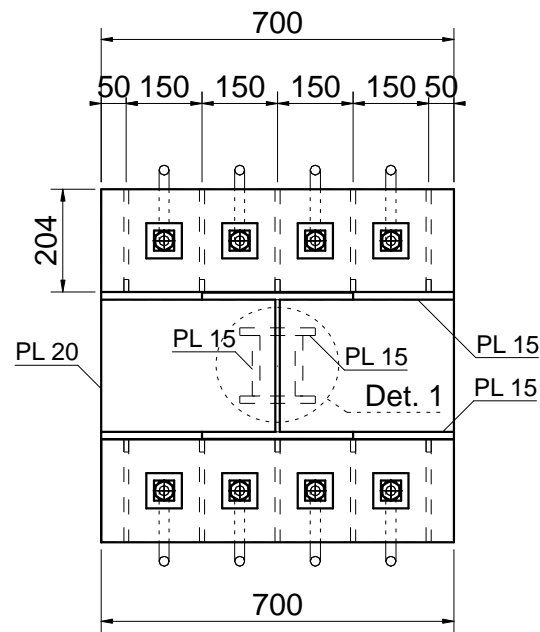


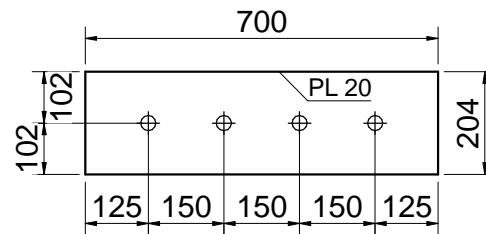
3D View



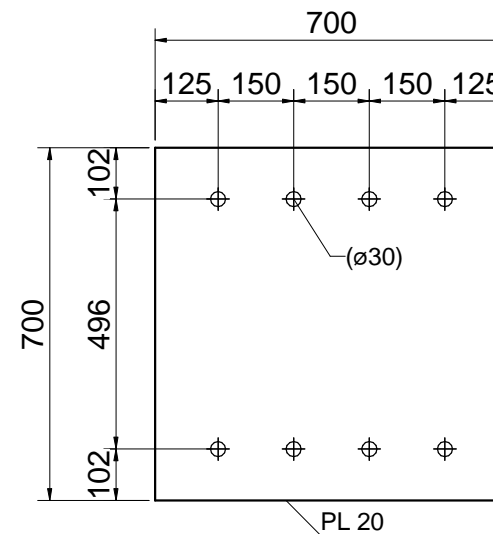
Side View



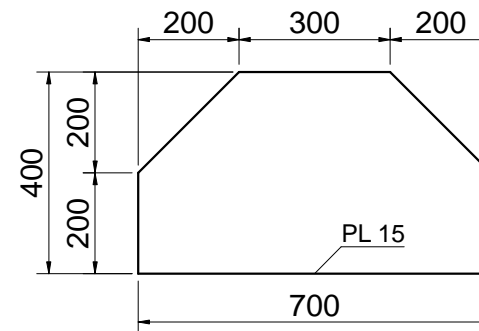
Plan View



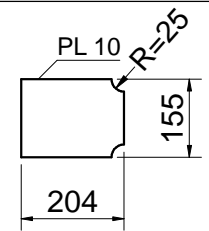
Top Plate



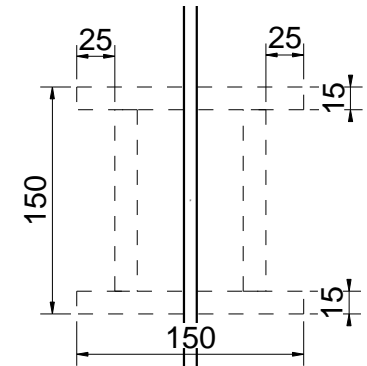
Base Plate



Flange Plate



Stiffeners



Det 1

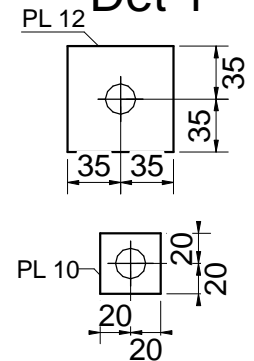


Plate washers

Model the Base Plate and Anchor bolts as shown

- There is a shear key made of 4 plates under the baseplate
- Anchor bolts are M20 J Type with given dimensions
- Anchor bolt holes are 30 mm. Double Plate washers and double nuts are provided
- Flanges of the HEA300 column have been cut and extended with the Flange Plates
- Watch the tutorial here: https://youtu.be/WEyGk5zQ_yA